



LEFROY BROOKS

1 8 2 8 T R O U T M A N S T R E E T
R I D G E W O O D N E W Y O R K N Y 1 1 3 8 5 U S A
T: +1(718) 302 5292 F: +1(718) 302 4177

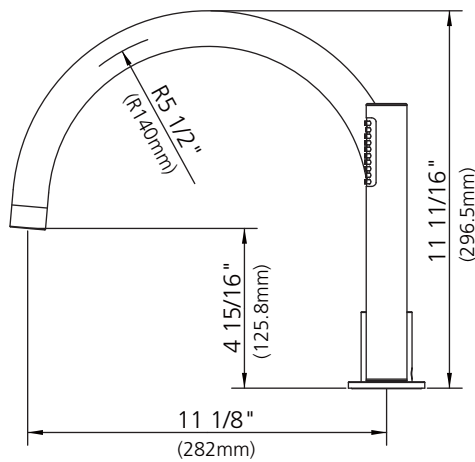
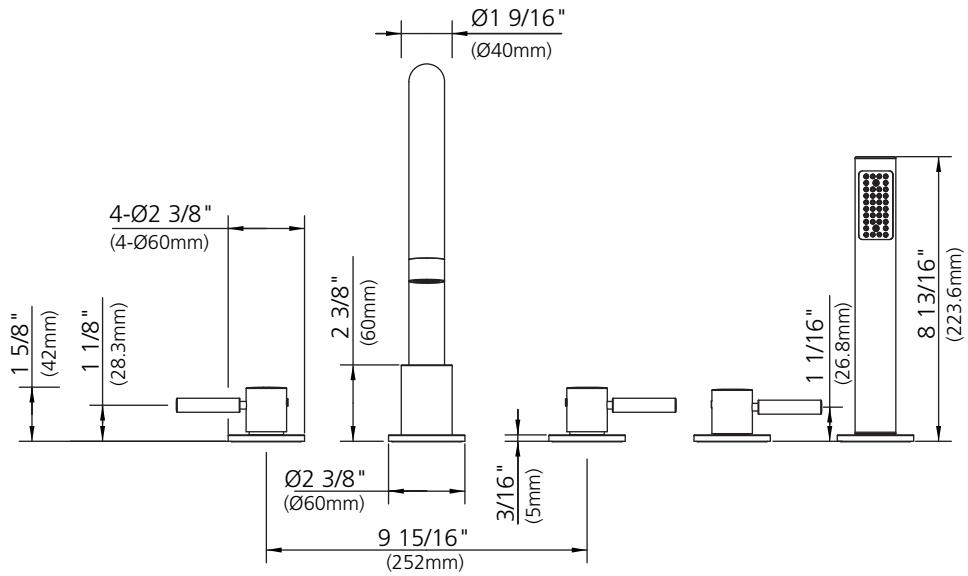
X1-1056

ZU DECK 5-HOLE BATH SET & PULL-OUT HAND SHOWER WITH
DECK DIVERTER - TRIM ONLY, TO SUIT R1-4007 ROUGH

DIMENSIONAL DATA SHEET

DATE: 17 May 2012

No: A66F279



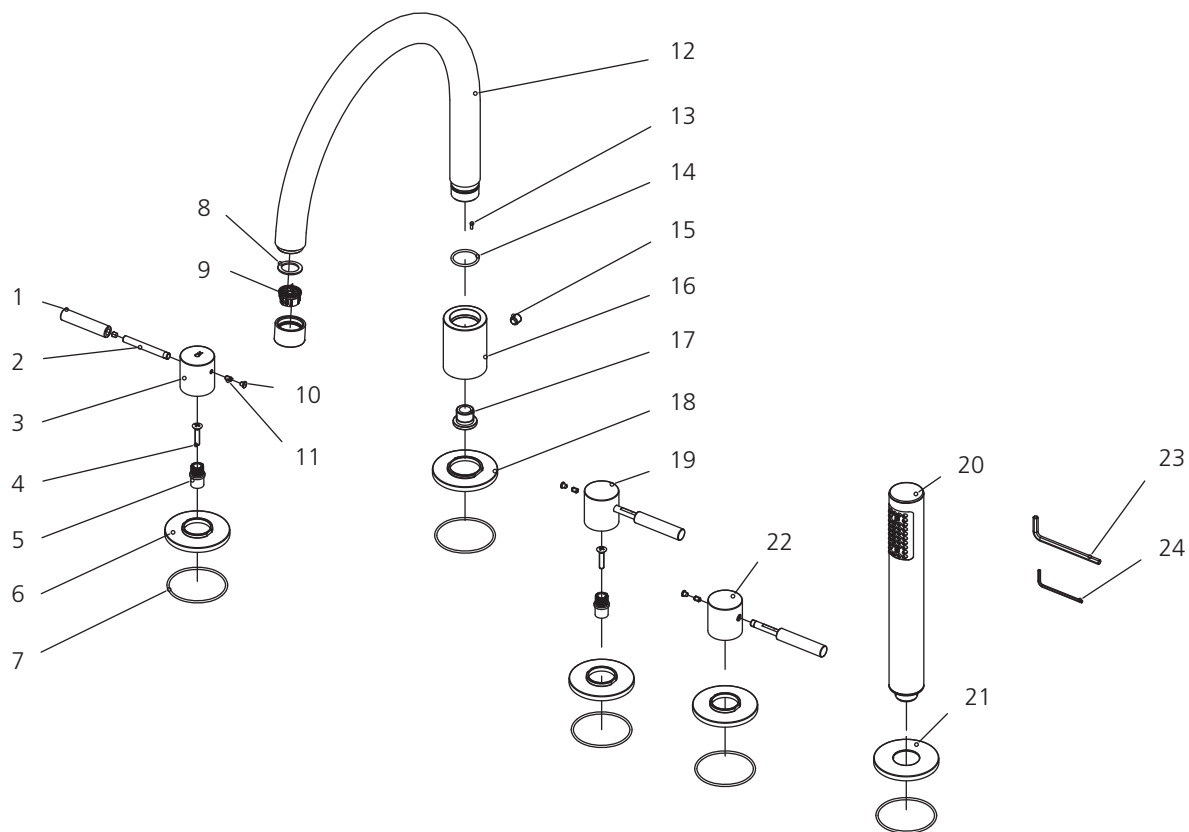
COPYRIGHT © LBP LTD 2012. ALL RIGHTS RESERVED.

DIMENSIONS IN INCHES & MILLIMETRES

WHILST EVERY EFFORT IS MADE TO ENSURE THE ACCURACY OF THESE DATA SHEETS THEY ARE SUBJECT TO CHANGE WITHOUT NOTICE AS PART OF THE COMPANY'S PRODUCT DEVELOPMENT PROCESS

X1-1056

ZU DECK 5-HOLE BATH SET & PULL-OUT HAND SHOWER WITH DECK DIVERTER - TRIM ONLY, TO SUIT R1-4007 ROUGH



1	Handle sleeve (038104)	9	Aerator insert (114237R)	17	Adaptor (067591)
2	Handle stem (108926)	10	Plug (028008)	18	Escutcheon (303454)
3	Handle seat (215502-51)	11	Set screw (292562)	19	Handle seat (215502)
4	Screw (053031)	12	Spout assembly (139842)	20	Handshower (S2111104)
5	Handle adaptor (110325)	13	Pin (003150)	21	Escutcheon (071390)
6	Escutcheon (215462)	14	O-ring (004007)	22	Handle seat (215507)
7	O-ring (004640N)	15	Set screw (292565)	23	Allen key (031011)
8	Oil-seal (010899)	16	Canopy (000889)	24	Allen key (031003)

Standards

IAPMO/cUPC Listed
Meets A112.18.1